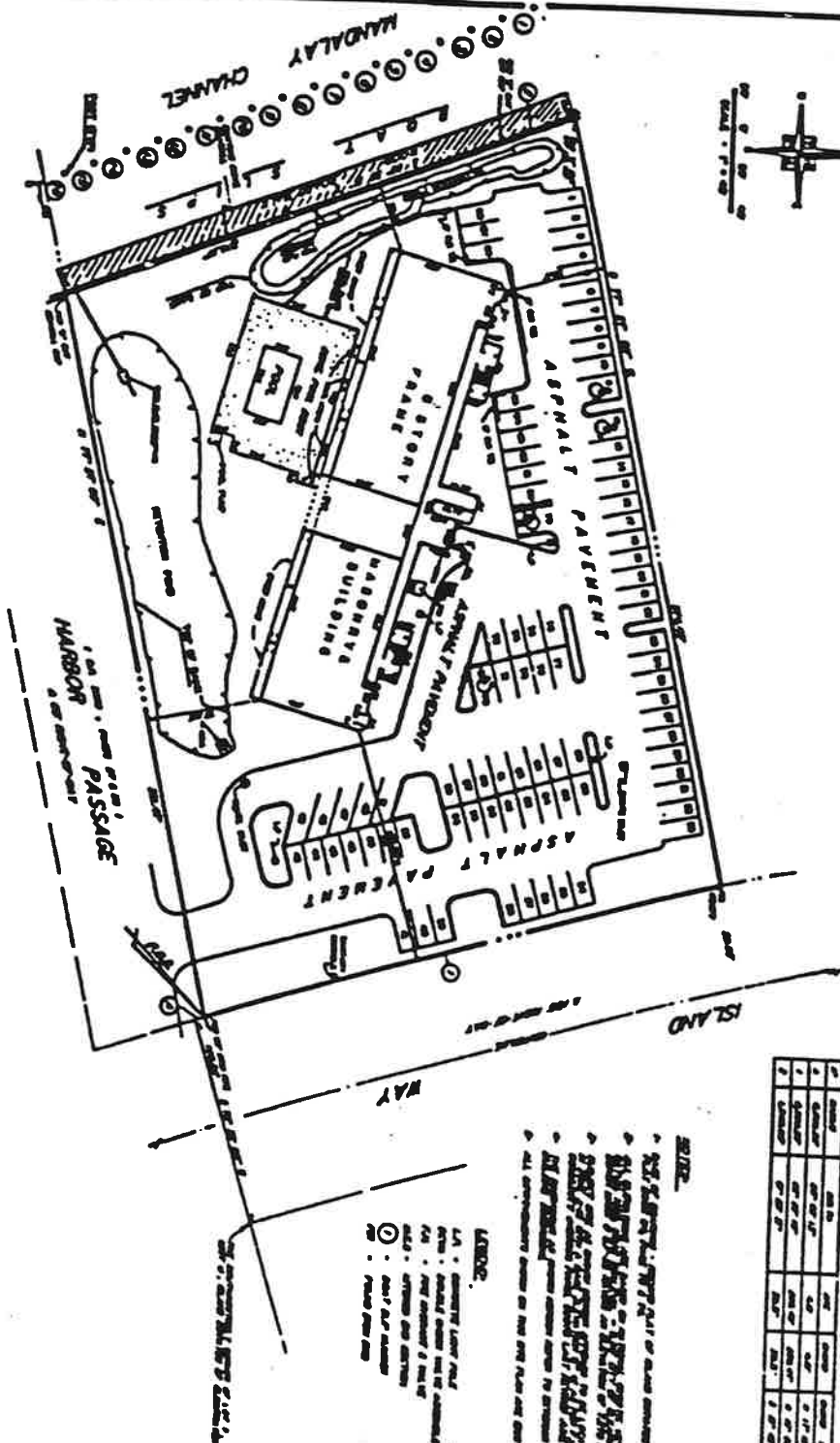
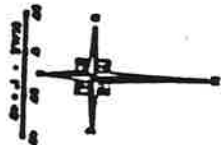


650 ISLAND WAY , A CONDOMINIUM

A CONDOMINIUM LYING IN SECTION 8 ; TOWNSHIP 29 SOUTH , RANGE 19 EAST ,
IN THE CITY OF CLEARWATER ; PINELLAS COUNTY , FLORIDA .



UNIT	Area	Count	Notes
1	1000	1	
2	1000	1	
3	1000	1	
4	1000	1	
5	1000	1	
6	1000	1	
7	1000	1	
8	1000	1	
9	1000	1	
10	1000	1	

NOTES:

1. SEE PLANS FOR THE PART OF ROAD BOUNDARY LINE 6
2. SEE PLANS FOR THE PART OF ROAD BOUNDARY LINE 7
3. SEE PLANS FOR THE PART OF ROAD BOUNDARY LINE 8
4. SEE PLANS FOR THE PART OF ROAD BOUNDARY LINE 9
5. SEE PLANS FOR THE PART OF ROAD BOUNDARY LINE 10
6. SEE PLANS FOR THE PART OF ROAD BOUNDARY LINE 11
7. SEE PLANS FOR THE PART OF ROAD BOUNDARY LINE 12
8. SEE PLANS FOR THE PART OF ROAD BOUNDARY LINE 13
9. SEE PLANS FOR THE PART OF ROAD BOUNDARY LINE 14
10. SEE PLANS FOR THE PART OF ROAD BOUNDARY LINE 15

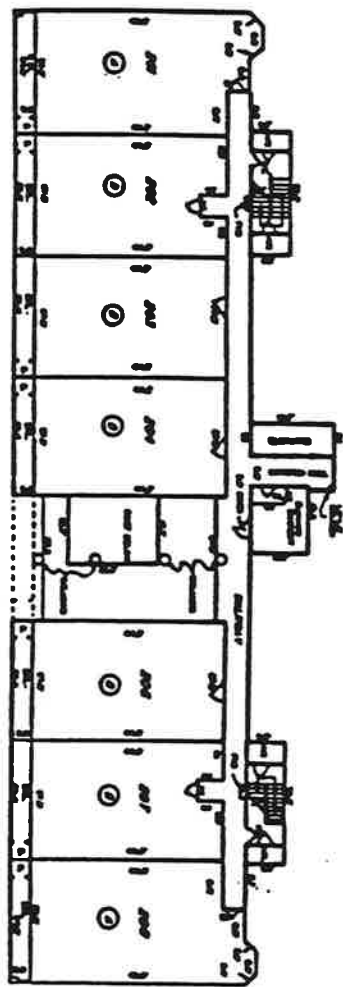
LEGEND:

- 1. 1" = 1' - CONCRETE FLOOR FINISH
- 2. 1" = 1' - CONCRETE FLOOR FINISH TO BE ASSEMBLED
- 3. 1" = 1' - CONCRETE FLOOR FINISH TO BE ASSEMBLED
- 4. 1" = 1' - CONCRETE FLOOR FINISH TO BE ASSEMBLED
- 5. 1" = 1' - CONCRETE FLOOR FINISH TO BE ASSEMBLED
- 6. 1" = 1' - CONCRETE FLOOR FINISH TO BE ASSEMBLED
- 7. 1" = 1' - CONCRETE FLOOR FINISH TO BE ASSEMBLED
- 8. 1" = 1' - CONCRETE FLOOR FINISH TO BE ASSEMBLED
- 9. 1" = 1' - CONCRETE FLOOR FINISH TO BE ASSEMBLED
- 10. 1" = 1' - CONCRETE FLOOR FINISH TO BE ASSEMBLED

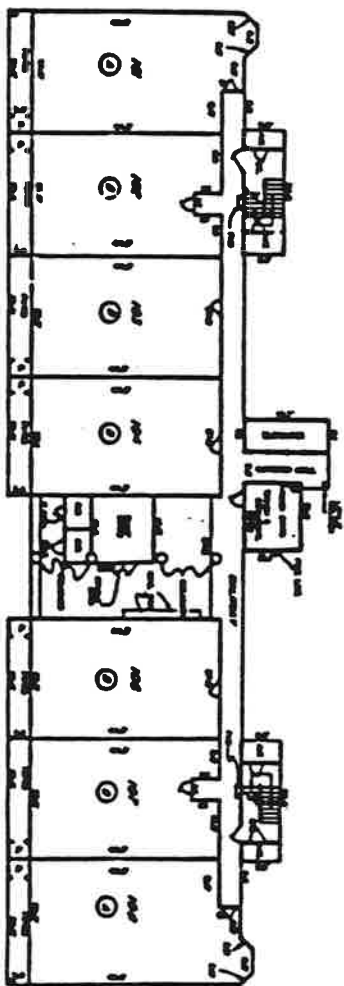
BEHRENS & BERKELEY
ENGINEERS, ARCHITECTS, PLANNERS
1000 N. W. 10th Street, Suite 1000
Fort Lauderdale, Florida 33304
(305) 555-1100

650 ISLAND WAY , A CONDOMINIUM

A CONDOMINIUM LYING IN SECTION 8 ; TOWNSHIP 29 SOUTH RANGE 15 EAST ,
IN THE CITY OF CLEARWATER ; PINELLAS COUNTY , FLORIDA .



SECOND FLOOR
SEE SHEET 18



FIRST FLOOR
SEE SHEET 17



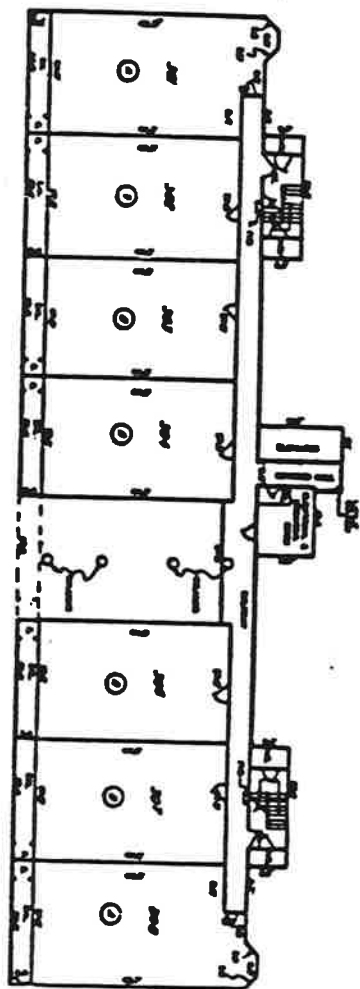
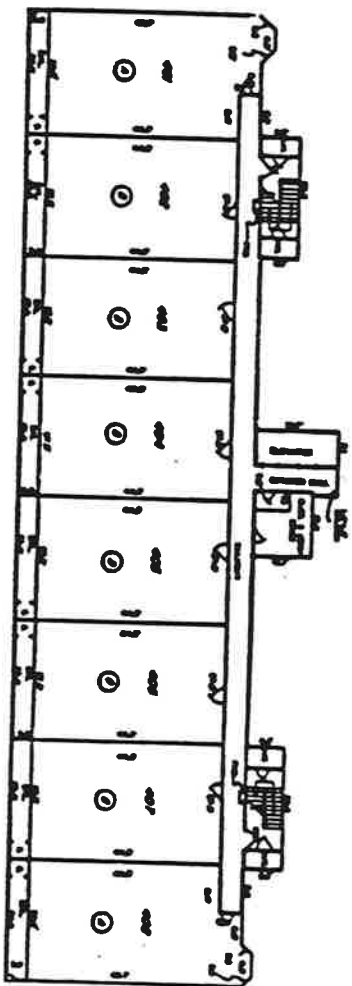
©2007
 ALL RIGHTS RESERVED
 THIS DRAWING IS THE PROPERTY OF
 EDWANTLE ENGINEERING, INC.
 AND IS NOT TO BE REPRODUCED OR
 TRANSMITTED IN ANY FORM OR BY
 ANY MEANS, ELECTRONIC OR MECHANICAL,
 INCLUDING PHOTOCOPYING, RECORDING,
 OR BY ANY INFORMATION STORAGE AND
 RETRIEVAL SYSTEM, WITHOUT THE
 WRITTEN PERMISSION OF EDWANTLE
 ENGINEERING, INC.

EDWANTLE ENGINEERING, INC.
 1000 1ST AVENUE, SUITE 100
 CLEARWATER, FLORIDA 34615
 (813) 461-1000

SHEET 17 OF 18

650 ISLAND WAY , A CONDOMINIUM

A CONDOMINIUM LYING IN SECTION 8 ; TOWNSHIP 29 SOUTH RANGE 15 EAST ,
IN THE CITY OF CLEARWATER ; PINELLAS COUNTY , FLORIDA .



SEE OTHER FLOORING AND SHEET 1 OF 4.

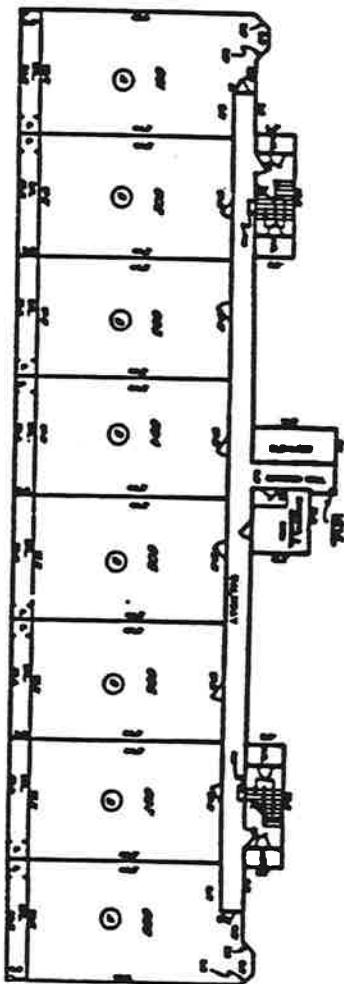


SPADOLE ENGINEERING, INC.
 10000 W. GULF BLVD., SUITE 100
 CLEARWATER, FLORIDA 34615
 PHONE: (813) 461-1000

SHEET 4 OF 6

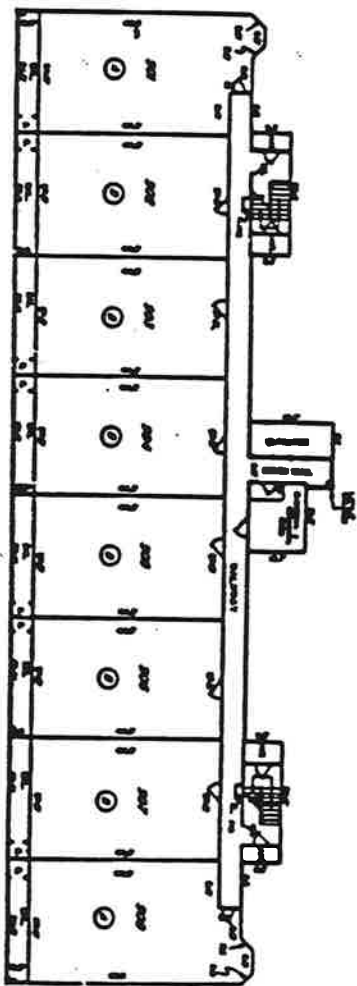
650 ISLAND WAY , A CONDOMINIUM

A CONDOMINIUM LYING IN SECTION 8 ; TOWNSHIP 29 SOUTH , RANGE 15 EAST ,
IN THE CITY OF CLEARWATER ; PINELLAS COUNTY , FLORIDA .



5TH FLOOR
KEY SYMBOLS : SEE

DETAILED BY: [Signature]



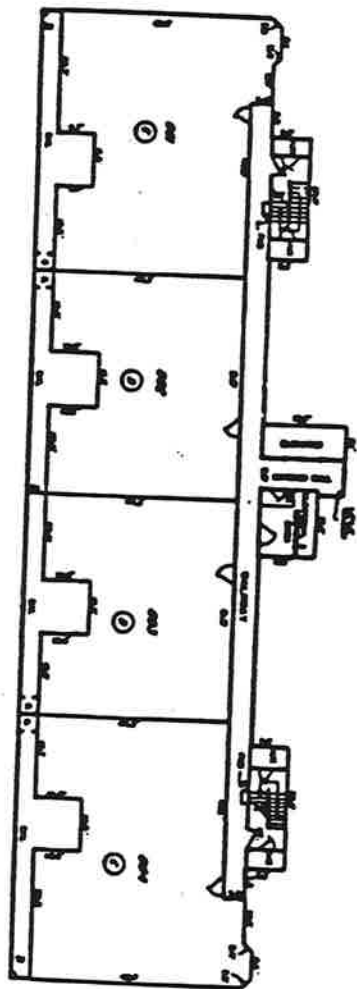
7TH FLOOR
KEY SYMBOLS : SEE



ROBERT D'AMICO, INC.
 ARCHITECTS
 1401 1ST AVENUE, SUITE 100
 CLEARWATER, FLORIDA 34615
 TELEPHONE: (813) 461-1000

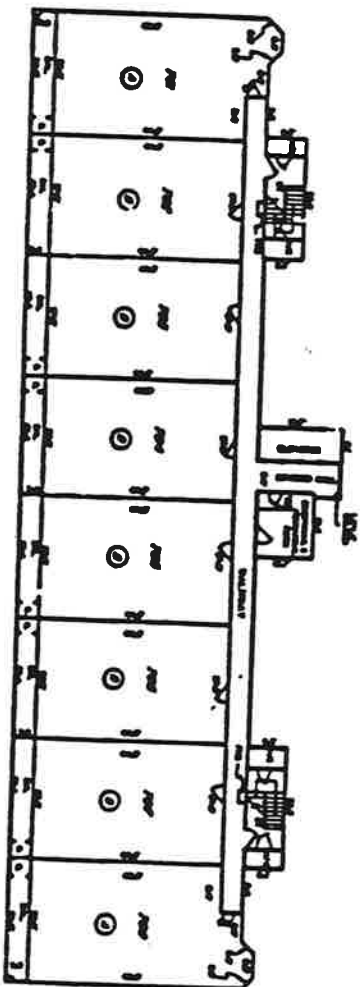
650 ISLAND WAY , A CONDOMINIUM

A CONDOMINIUM LYING IN SECTION 8 ; TOWNSHIP 29 SOUTH , RANGE 15 EAST ,
IN THE CITY OF CLEARWATER ; PINELLAS COUNTY , FLORIDA .



7TH FLOOR
NEW DESIGN : 10/11/00

DESIGNED BY: J. J. J. J.



8TH FLOOR
NEW DESIGN : 10/11/00



SCHOLLE ENGINEERING, INC.
1400 10TH STREET, SUITE 100, CLEARWATER, FL 34615
TEL: (813) 461-1100